



ARCUATA



DAVIS VINEYARD
Life Begins



NEIGHBOURHOODS
By **eight** HOMES

Life Begins at Davis Vineyard

Discover Melbourne's Hidden Gem:
Davis Vineyard – The Best Kept Secret
for Premium House and Land Estates

Located in the heart of the well established suburb of Diggers Rest, Davis Vineyard is set in beautiful green surroundings with shopping, recreational amenities and great schools all within easy reach of your new home.



Parklands

Discover the Serene Oasis
of Davis Vineyard

One of the highlights of Davis Vineyard Parklands is the network of walking tracks that meander through the grounds, inviting visitors to explore at their own pace.

Whether you prefer a leisurely stroll to soak in the scenic views or an early morning run to get your heart pumping, our walkways offer the perfect setting to connect with nature and enjoy the rejuvenating effects of the great outdoors.



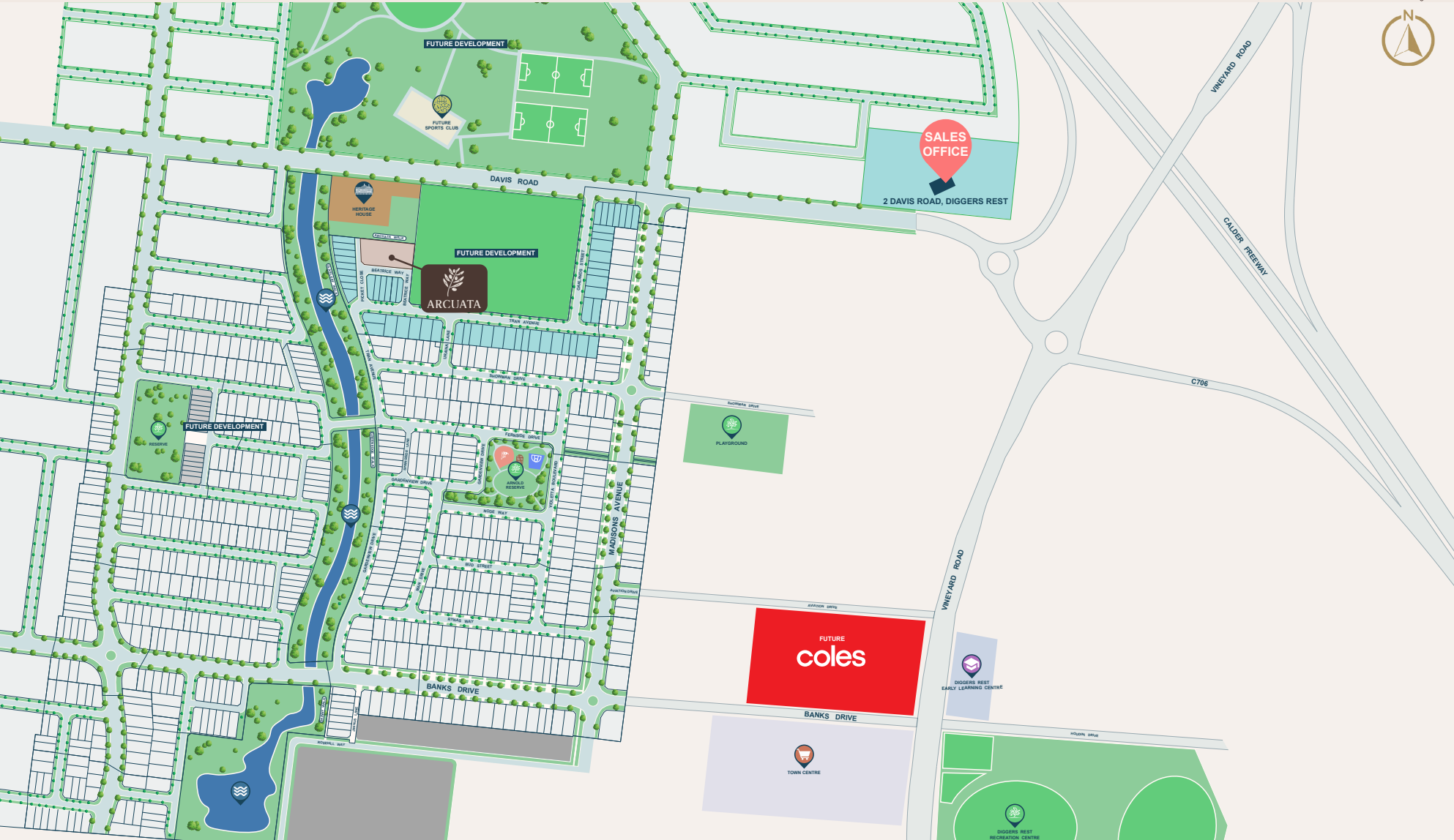
Waterways

We're creating a unique waterfront lifestyle that welcomes nature and allows you to immerse yourself in the great outdoors only minutes from your home.

With more than 2kms of waterfront walkways, proposed outdoor gym facilities and picturesque barbecue spaces, Davis Vineyard has your suburban escape covered.



MASTER PLAN

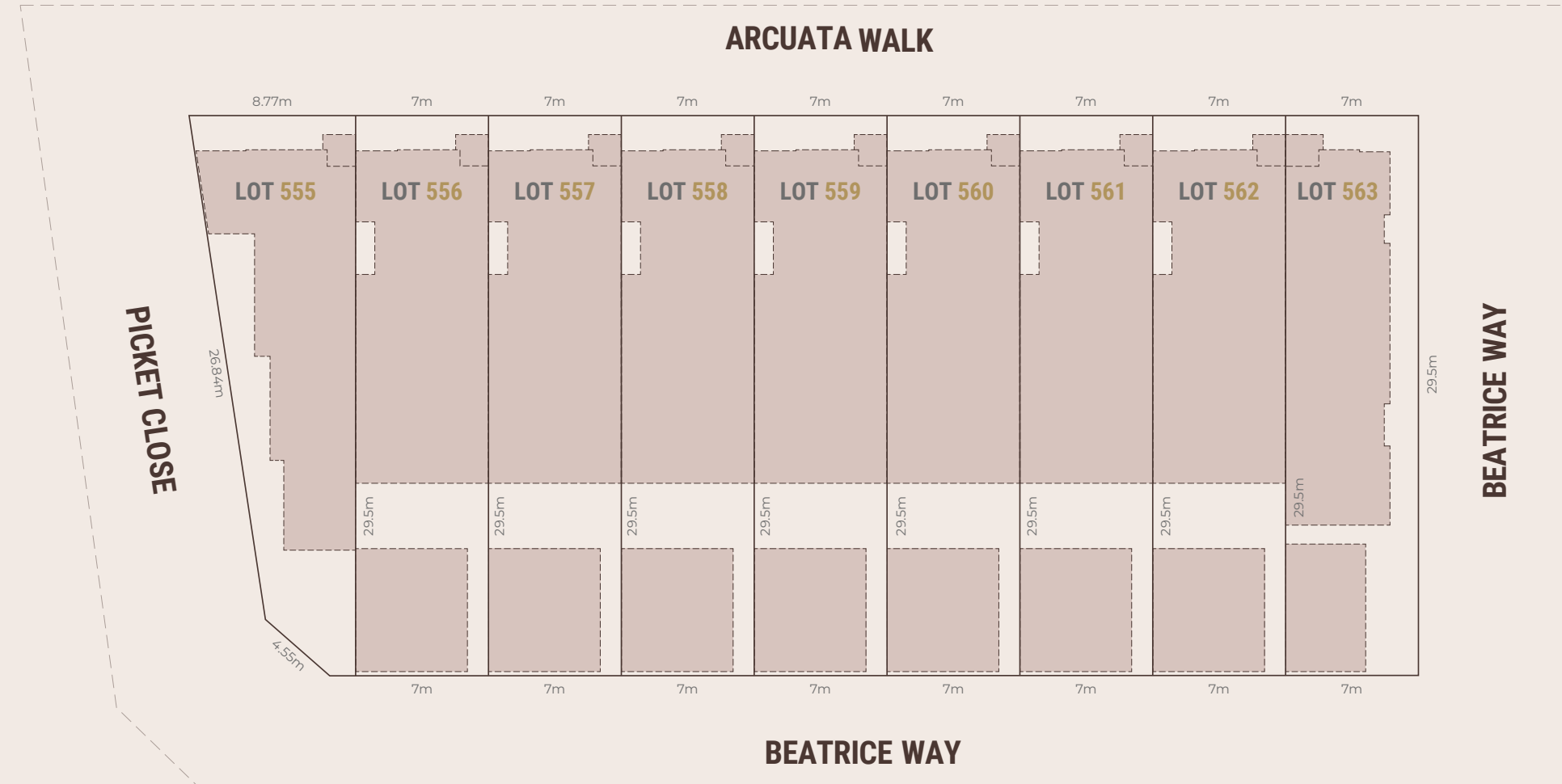


4 mins Sunbury
29 mins Melbourne CBD
13 mins Watergardens Shopping
18 mins Melbourne Airport
4 mins Train Station

LOT 555 LOT 556 LOT 557 LOT 558 LOT 559 LOT 560 LOT 561 LOT 562 LOT 563



Artist's Impression



SITE PLAN

The images and plans are for illustration purposes only and should be used as such. Siting is not to scale and may differ to final built forms.



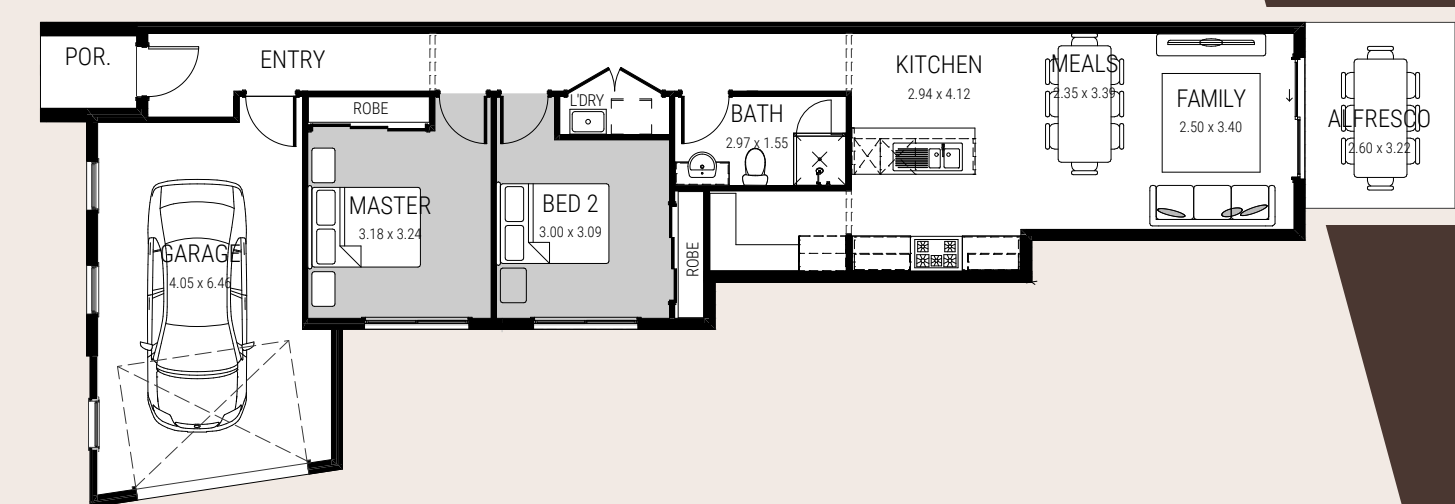
FACADE A - LOT 555



FACADE B - LOT 556 & 562

FACADE C - LOT 557, 559 & 561

FACADE D - LOT 558 & 560



ARCUATA

2 1 1

House size: 13.14sq | 122.03m²

Facade: A

Lot: 555

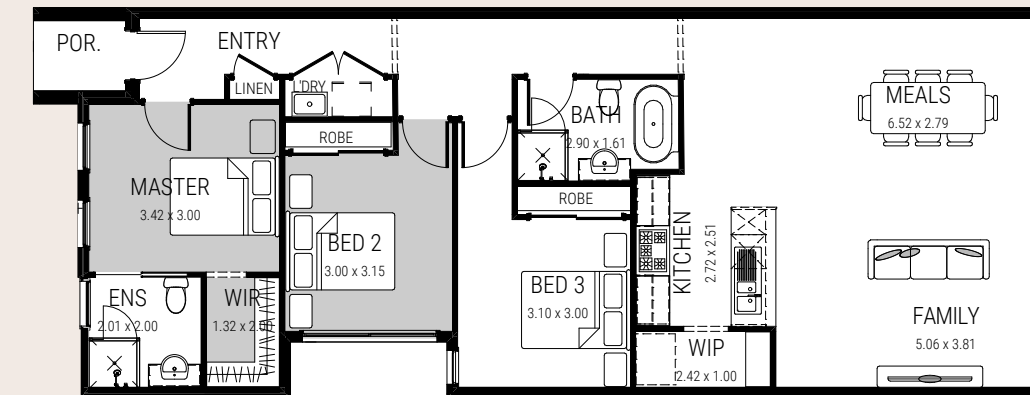
Lot Size: 188m²

House exterior length:

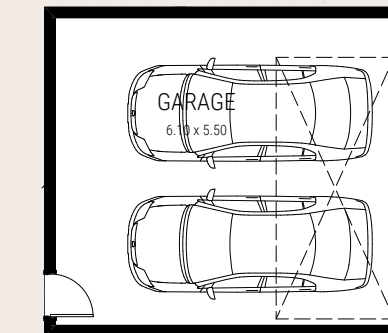
House - 21,885mm

House exterior width: 8,570mm

FLOOR PLAN



FLOOR PLAN



ARCUATA

3 2 2

House size: 17.14sq | 159.26m²

Facade: B, C, D

Lot: 556, 557, 558, 559, 560, 561, 562

Lot Size: 206m²

House exterior length:

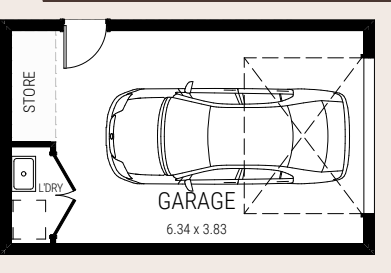
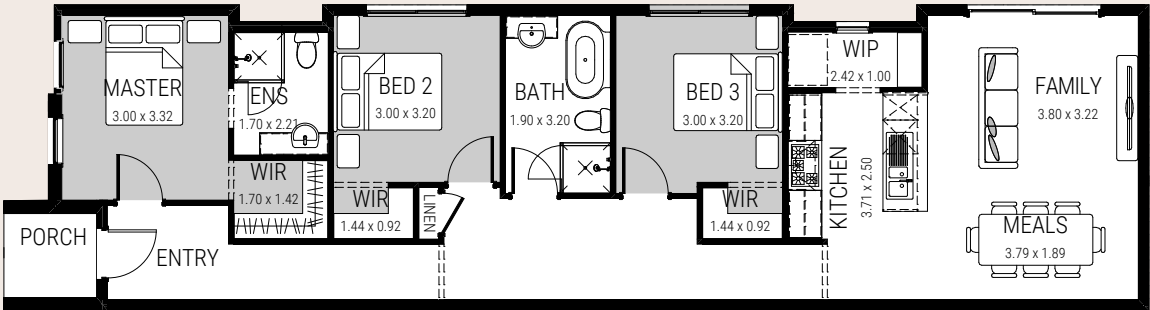
House - 18,295mm

Garage - 6,560mm

House exterior width: 7,000mm



FACADE E - LOT 563



ARCUATA

3 2 1

House size: 14.77sq | 137.17m²

Facade:

Lot: 563

Lot Size: 206m²

House exterior length:

House - 19,900mm

Garage - 7,400mm

House exterior width: 5,500mm

FLOOR PLAN

INCLUSIONS - TURNKEY

RE-CONSTRUCTION

- Bushfire assessment report
- Concrete pump for slab
- Site Analysis. Including soil test report, survey plan and property information. Foundations – 'M' class waffle slab up to 300mm of fall over building envelope
- Engineer's slab design and computations
- Building Permit – Including permit fees, working and detailed specifications
- Connections – Underground electrical, gas, sewer, storm water and water for allotment up to 550m² with 5m set back
- 100mm sewer grade PVC storm water system

STRUCTURAL

- 90mm machine grade pine studs (MGP10)

EXTERNAL FEATURES

- Fully rendered home including rendered prefabricated AAC panels
- Fencing, letterbox & landscaping

MATERIALS

- Natural Colour Mortar Joints – Rolled Finish
- Colorbond roof
- 820 x 2040mm tempered hardboard Front Entry door
- Timber Front Entry door frame
- Aluminium Windows and sliding doors (as per standard plan)
- Chrome terrace entry sets
- Double cylinder snib deadlock to all glass sliding doors
- Painted fibre cement sheet Infill above windows and doors (excluding facade)
- Painted fibre cement sheet Infill above Garage opening (design specific)
- 2 x Garden taps (1 to front yard and 1 to rear yard)

INSULATION

- R4.1 batts to ceiling
- R2.0 wall batts to external walls of dwelling

SIX STAR ENERGY RATING

- All homes are 6 Star Energy rating compliant in their standard form and best house orientation*

FLOORING

- Stylish Category 1, timber look laminate (refer to specific plan for locations)
- Category 1 ceramic floor tiles (up to 400mm x 400mm) to wet areas
- Category 1 carpet to remainder of home

INTERNAL FEATURES

- 2590mm ceiling height
- 2040mm high flush panel Internal Doors including robes and linen (Design Specific) (Excludes Laundry linen)
- Chrome door furniture
- Chrome handles (Category 1 Range) to robes, linen and pantry (Design Specific)
- Cushioned door stops throughout
- 67mm x 18mm DAR skirtings and architraves throughout
- 75mm Cove Cornice to home garage
- Semi-frameless shower screens with pivot doors
- Roller blinds to windows

PAINTWORK

External

- Front Entry door: Gloss enamel finish
- Woodwork: External acrylic

Internal

- Woodwork: Gloss enamel finish
- Ceilings: Flat acrylic
- Matt Acrylic 3 Coat Premium Paint System

KITCHEN

- Cupboards – Modular cabinets including melamine shelves (Category 1 Range)
- 20mm Quantum Zero square edge benchtop with 16mm shadowline
- Extensive Kitchen base cabinetry (Category 1 Range)
- Doors and Drawers – Square edge laminate (Category 1 Range)
- Chrome handles (Category 1 Range)
- Chrome 1 3/4 bowl sink with drainer
- Dishwasher
- Chrome sink mixer tap
- Laminate overhead cupboards (Category 1 Range)
- 900mm upright cooker and 900mm canopy rangehood
- Ceramic wall tiles to Kitchen splashback (Category 1 Range)
- Kitchen rangehood externally flued

STORAGE

- Robes – White melamine top shelf with hanging rail and hinged doors
- Walk in Robe – White melamine top shelf with hanging rail
- Pantry – Four white melamine shelves
- Linen – Four white melamine shelves

BATHROOMS, ENSUITE & POWDER ROOM (If applicable)

- 1100mm high polished edge mirrors to full width of vanity
- Ceramic wall and floor tiles up to 400mm x 400mm (Category 1 range)
- Laminate cabinetry including benchtops from Category 1 range
- White toilet suites
- White semi recessed vanity basins
- Chrome basin mixers
- White bath
- Chrome Bath Outlet
- Toilet roll holders
- Towel rail
- Tiled shower bases to Ensuite and Bathroom
- Chrome multifunction shower heads
- Semi-frameless shower screens with pivot doors
- 100mm high skirting tile to all wet areas (Excluding Kitchen)

LAUNDRY

- 45 litre stainless steel trough and steel cabinet
- Chrome sink mixer
- Chrome standard washing machine stops
- 100mm high skirting tile
- Aluminium Sliding door to Laundry

GARAGE

- Sectional overhead Garage door
- 820 x 2040mm tempered hardboard rear Entry door (design specific)

ELECTRICAL

- Double power points throughout (design specific)
- Fixed batten light points as per electrical plan
- 1 x external light to rear of home and 1 x side/laundry wall
- White switch plates from Category 1 range
- Hardwired smoke detector with battery backup
- Exhaust fans above all showers
- 2 x TV points including 5m coaxial cable to roof space
- 2 x Telephone points
- RCD safety switch and circuit breaker to meter box

HOT WATER UNIT

- 200lt Gas boosted Solar hot water system including 2 solar panel collectors

HEATING & COOLING

- 3 Star Gas Ducted Heating unit – Ducted to all living areas and bedrooms
- 3.5KW Split system

TERMITE TREATMENT

- Part A: Termite collars to all pipes passing through the concrete slab



DAVIS VINEYARD

Life Begins

Rick Stephenson | Mob: 0408 356 264 | Email: Rick@davisvineyard.com.au

Alex Mason | Mob: 0431 158 008 | Email: Alex@davisvineyard.com.au

Kathy Salva | Mob: 0417 571 005 | Email: Kathy.Salva@8homes.com.au

While we have taken care to ensure the accuracy of information in this document at the time of publication, Davis Vineyard gives no warranty and makes no representation as to the accuracy or sufficiency of any descriptions, photographs, illustrations or statements contained in this document and accepts no liability for any loss which may be suffered by any person who relies upon the information presented. All information provided is subject to change without notice.

Dimensions, areas, and layouts are approximate only and are subject to change without notice. Purchasers should make their own enquires and satisfy themselves as to whether the information provided is current and correct and if appropriate seek advice before entering any contract. Photographs and illustrations in this brochure are indicative only and may not depict the actual development. Images are for illustrative purposes and may include items that will incur additional costs. Images depict items not provided by Eight Homes including furniture, landscaping, porch, decking and other decorative items. Please refer to the house and land inclusions and house specific working drawings for all details.

Plans, maps, images, drawings and measurements are for illustration only, are not to scale and may differ from final built forms. Your contract of sale will set out all binding terms, Geographical restrictions apply. DBU 18864

